

Quick Fitting Type Speed Control Valve

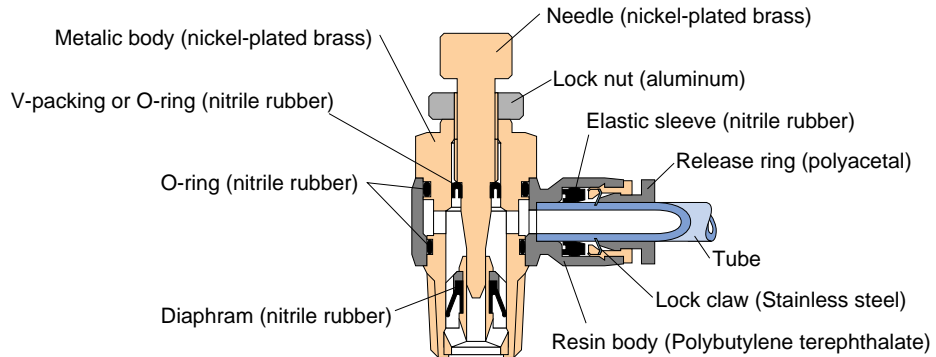
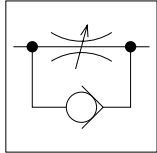
Speed Controller Standard Type

Features

■ The Speed Controller controls the operation speed of a driving device.

Construction

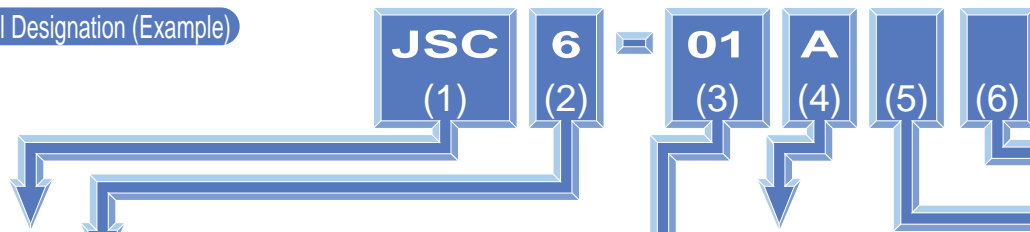
Graphical representation



Specification

Fluid admitted	Air	
Service pressure range	0 ~ 150psi	0 ~ 0.9MPa
Check valve operating pressure	7.25psi	0.05Mpa
Service temperature range	32 ~ 140°F	0 ~ 60°C

Model Designation (Example)



(1) Type

(2) Tube dia.

Tube dia.	mm size					
Code	4	6	8	10	12	
Size(mm)	φ4	φ6	φ8	φ10	φ12	
Tube dia.	inch size					
Code	5/32	3/16	1/4	5/16	3/8	1/2
Size(mm)	φ5/32	φ3/16	φ1/4	φ5/16	φ3/8	φ1/2

(3) Thread size

Thread size	Metric thread(mm)	Taper pipe thread			
Code	M5	01	02	03	04
Size	M5×0.8	R1/8	R1/4	R3/8	R1/2

Thread size	Unified fine thread	American standard taper pipe thread			
Code	U10	N1	N2	N3	N4
Size	10~32UNF	NPT1/8	NPT1/4	NPT3/8	NPT1/2

(4) Control direction

A : Meter-out control

(Inscription "A" on needle top or silver-color lock nut) (*1)

B : Meter-in control

(Inscription "B" on needle top or black-color lock nut) (*2)

*Do not make this entry for JSU.

(5) Specification

K : Spring return type

Check valve operating pressure→0.02MPa(2.9 psi)

[Service pressure range→0 ~ 0.5MPa(0~73 psi)]

No code : Standard specification

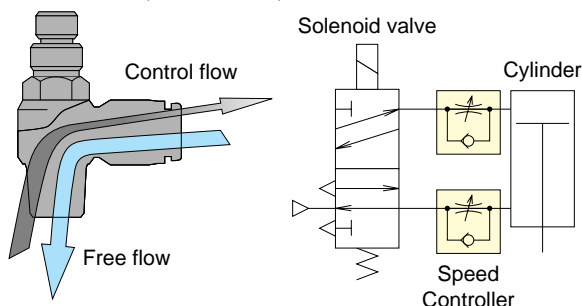
(6) Hexagon flat-to-flat specification

U: Hexagon flat-to-flat inch spec. (NPT)

No code: Hexagon flat-to-flat mm spec.

*1. Meter-out control

■ The flow rate of air entering from the thread side can be controlled, whereas air entering from the joint side comes out from the thread side at the same (not controlled) flow rate.



*2. Meter-in control

■ The flow rate of air entering from the joint side can be controlled, whereas air entering from the thread side comes out from the Joint side at the same (not controlled) flow rate.

